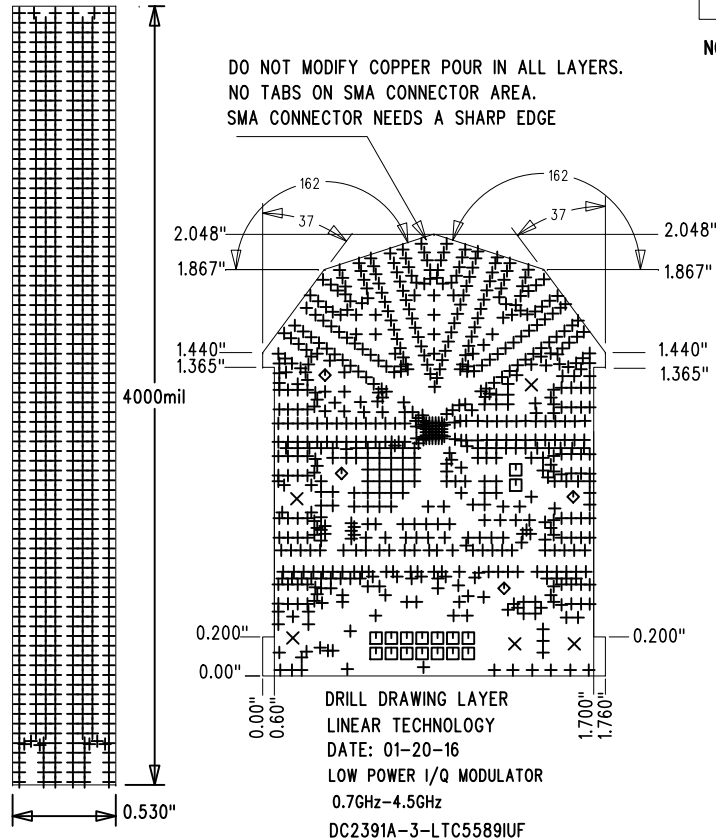
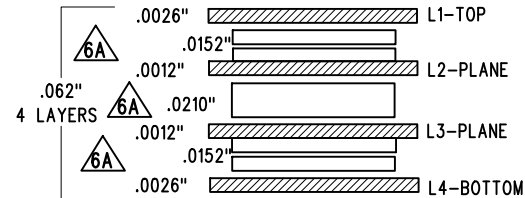


LTC DESIGNED  
IMPEDANCE TEST  
STRUCTURE COUPON



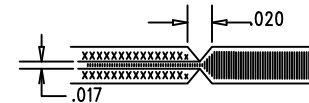
| SIZE  | QTY  | SYM | PLATED | TOL      |
|-------|------|-----|--------|----------|
| 0.006 | 1353 | +   | YES    | +/-0.003 |
| 0.096 | 5    | X   | YES    | +/-0.003 |
| 0.035 | 16   | □   | YES    | +/-0.003 |
| 0.066 | 4    | ◇   | YES    | +/-0.003 |

LAYERING STRUCTURE



- NOTES :
1. FAB PER IPC-A-600.
  2. MATERIAL: -EPOXY FIBERGLASS, NELCO 4000-13  
-FINISHED THICKNESS TO BE 0.062" +/- .005"  
-TOTAL OF 4 LAYERS WITH 2 OZ. CU ON THE OUTER LAYERS AND 1 OZ. CU ON THE INNER LAYERS.  
-FLAMMABILITY RATING: 94 V-0 MINIMUM.
  3. SIZE: CUT TO DIMENSIONS AND TOLERANCES SHOWN.  
0.00" ARE PRIMARY DATUMS.
  4. DRILLING: -DRILL HOLES PER SCHEDULE. PLATE THROUGH HOLES WITH COPPER, 0.001" THICK MIN.  
-ALL HOLE SIZES ARE SPECIFIED AFTER PLATING.  
-HOLE LOCATION TOLERANCES ARE +/-0.003" IN RELATION TO CENTER
  5. FINISH: -SMOBC USING LPI BOTH SIDES, COLOR GREEN.  
-GOLD IMMERSION BOTH SIDES.  
-FOR SILKSCREENS: USE WHITE NON-CONDUCTIVE INK.
  6. CONTROLLED 50 OHM +/-5% IMPEDANCE FOR LAYER 1-2  
TRACE WIDTH 30 MILS. MUST BE TESTED ON LTC DESIGNED IMPEDANCE TEST STRUCTURE COUPON.  
EVERY PANEL MUST BE FABRICATE WITH ONE LTC DESIGNED IMPEDANCE TEST STRUCTURE COUPON  
MARK PANEL NUMBER ON BOARDS AND COUPON

6A SUBJECT TO CHANGE BY MANUFACTURER, DEPENDING ON DIELECTRIC CONSTANT DEVIATIONS. PLEASE CONSULT LTC.



|  |  |  |  |   |
|--|--|--|--|---|
| UNLESS OTHERWISE SPECIFIED<br>DIMENSIONS ARE IN INCHES<br>TOLERANCES:<br>0.XX" = ±0.01"<br>0.XXX" = ±0.005"<br>INTERPRET DIM AND TOL<br>PER ASME Y14.5M-1994<br>THIRD ANGLE PROJECTION |  | APPROVALS<br>PCB DES. AK<br>APP ENG. ANDY M. |  | <p>1630 MCCARTHY BLVD<br/>MILPITAS, CA 95035<br/>PH: (408)432-1900<br/>www.linear.com<br/>LTC CONFIDENTIAL-<br/>FOR CUSTOMER USE ONLY</p> |
|  |  |  |  | TITLE: FABRICATION DRAWING<br>LOW POWER I/Q MODULATOR<br>0.7GHz-4.5GHz  |
|  |  |  |  | SIZE N/A  |
|  |  |  |  | IC NO. LTC5589IUF<br>DEMO CIRCUIT 2391A   |
|  |  |  |  | REV 3   |
|  |  | SCALE = NONE                                 |  | FILENAME: DC2391A-3.PCB   |
|  |  |  |  | SHT 1 OF 1  |